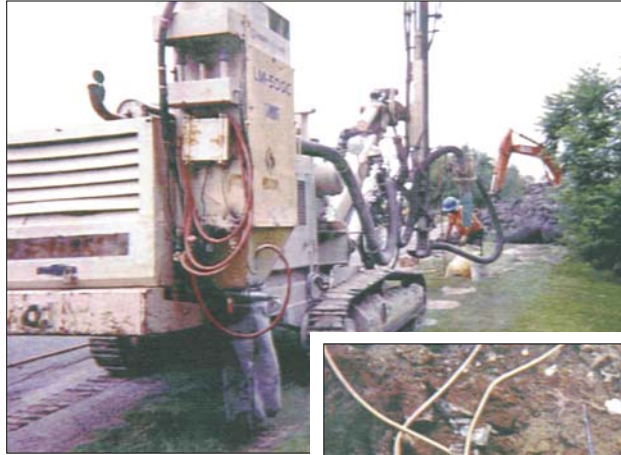




Traditional trench open-cut method for laying water main pipe in Elizabethtown.



Vertical drilling of a blast pattern for a water main trench.



Preparing a water service borehole using a horizontal rock-drilling rig.

The large amount of rock in the area required a significant amount of blasting and rock boring.

Elizabethtown Water Supply - Township of Elizabethtown

The Ainley Group and BFC utilities undertook this major Design-Build project in 1998. The Ainley Group undertook the detailed engineering design and construction quality control and BFC Utilities undertook the construction work.

The design included sizing watermains, a pumping station to service approximately 255 homes distributed over 13,000 metres of roadways and a crossing of Highway 401.

The watermains were installed using a variety of construction techniques, including earth and rock horizontal drilling, open-cut and boring and jacking methods.

The large amount of rock in the area required a significant amount of central blasting and rock boring. The contract also required the installation of service lines to of each home across private property. (approximately 12,000 metres of service lines in total).

Project Facts

Client: Ontario Ministry of Transportation-Ontario Clean Water Agency

Scope of Work:

- **Detailed design:**
 - Watermain sizing
 - New pumping station
 - Highway 401 crossing.
- **Construction field services:**
 - Directional drilling
 - Blasting and rock boring
 - Open-cut excavation
 - Installation of watermain and service lines.

Project Cost: \$6,250,000 (1998)