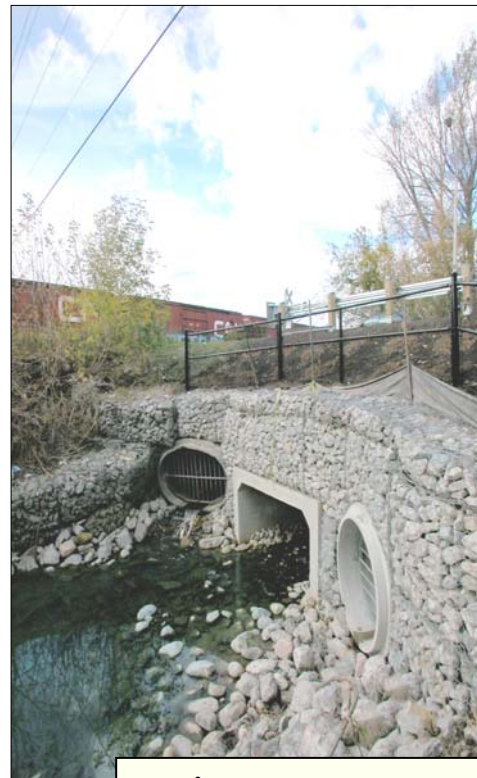




Completed stream-bank restoration at Enford Road showing armour stone placement and the channel lined with river-run stone lined.

Slope stabilization was required to control stream-bank erosion adjacent to Enford Road.



Completed box culvert adjacent to the CNR tracks at Crosby Avenue.

Enford Road Stream Realignment and Crosby Ave. Culvert Replacement Town of Richmond Hill

In 2003, the Town of Richmond Hill retained the Ainley Group to undertake a stream bank stabilization project along a portion of German Mills Creek at Enford Road. Slope stabilization was required to control stream-bank erosion adjacent to the commercial properties.

Improvements to the stream included the removal of deposits at a twin road-crossing culvert outlet, minor realignment, installation of armour stone to control erosion of the stream banks and lining the bottom of the channel with river-run stones and cobbles to achieve a more naturalized morphology. Since the work involved the alteration of a watercourse, the necessary approvals were obtained from The Toronto and Region Conservation Authority and the Department of Fisheries and Oceans.

The Contract also included the design and construction of a box culvert replacement across Crosby Avenue adjacent the CNR tracks, downstream of the Enford Road project. Similar approvals were also required from TRCA and DFO in order to replace the deteriorated CSP culvert. Gabion headwalls were specified along with lining of the channel bottom with river run stones and cobbles at both the inlet and outlet.

Project Facts

Client: Town of Richmond Hill

Scope of Work:

- Preliminary and detailed design
- Obtaining approvals
- Alteration of a watercourse
- Removal of deposits
- Minor realignment
- Placement of steel-beam guiderail
- Installation of armourstone, river-run stones and cobbles
- Riparian plantings.

Project Cost: \$300,000 (2003)

Stream-bank disturbance was reinstated with riparian plantings consisting of native species of trees, shrubs and seed mixture resulting in a natural channel restoration. All works were completed in the dry.